

2012
ANNUAL
REPORT

CHAIRPERSON'S MESSAGE

As the Chairperson for the last four years, I am proud of the work this strong, environmentally responsible and adapting Conservation Authority does especially in these times of fiscal restraint. This was a particularly challenging year as we did not even know until well into the autumn what our provincial funding was going to be. Every member of the Board, all our staff and the many committed volunteers worked well together to keep Catfish Creek Conservation Authority (CCCA) up-to-date and effective.

Due to a reduction in our provincial grants, we were unable to do the required dredging in Port Bruce to prevent severe flooding. This preventative measure does not stop flooding completely but it reduces the severity of it. We are working with the Township of Malahide and the Port Bruce Ratepayers Association to secure a return in the provincial funding.

One important success we achieved this year was the completion of our Source Water Protection Plan. This work has been in progress for the past five years, involving many Technical Studies, an Assessment Report that had to be approved by the Provincial Government and now our actual Plan with all its regulations. It has been a long process but we are pleased with the result.

Continuing our commitment to Marsh Quest, the Carolinian Forest Festival, and the Maple Syrup Program in partnership with the Thames Valley District School Board, demonstrates our strong mandate to educate. Our excellent long-term working relationship with the East Elgin Secondary School Environmental Leadership Program is vital to our education programs and we very much value the leadership of Duncan Sinclair. Once again, we participated in Doors Open Port Stanley / Sparta by having the Yarmouth Natural Heritage Area open for guided tours. As well, our lands continue to offer excellent study opportunities for both the University of Western Ontario and the University of Guelph. We also have several Conservation Areas open for hiking with interpretive signage to help promote an understanding of our ecosystems and promote healthy living through exercise.

In closing, I want to acknowledge the excellent working relationship that has developed between the Grand River, the Long Point Region and the Kettle Creek Conservation Authorities and ourselves through the Source Water Protection Committee. We learn a lot from each other and work well together. This year we welcomed a new Board Member, Jim Jenkins who has very ably represented the Township of Malahide. We are sorry to be losing both of our Town of Aylmer representatives Judi Wright and Gerry Richer. All of our Board Members are a pleasure to work with and I want to thank them for their commitment to conservation and the Catfish Creek Conservation Authority. Also, a special thanks to the staff as well as all the volunteers, sponsors and organizations that supported and assisted the CCCA in achieving its many goals. The success of the work that is done would not be possible without your dedication and commitment.

Sally Martyn, CCCA Chairperson

IN MEMORIAM

On January 26th, the CCCA lost a longtime supporter and local conservationist. Bill Caverly represented the Township of Malahide on the CCCA Board of Directors for 25 years, seven as Chairperson and eight as Vice-Chairperson. His loyalty, dedication and wry sense of humour will always be remembered.

CORPORATE SERVICES

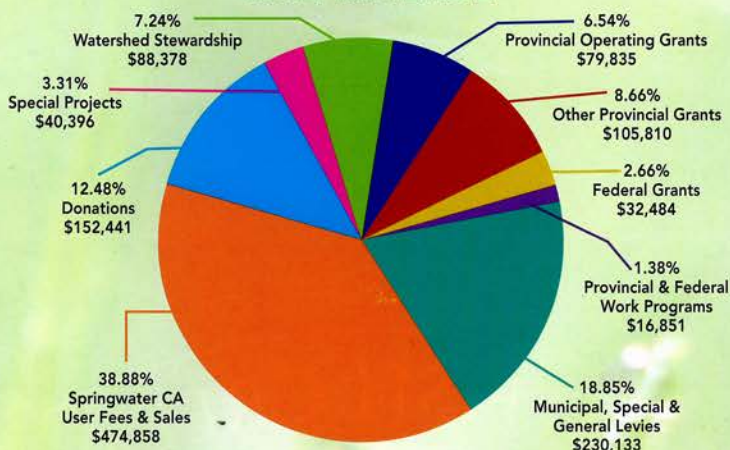
The activities of the Catfish Creek Conservation Authority are governed by a Board of Directors comprised of five members appointed by the five member municipalities of the Catfish Creek watershed.

BOARD MEMBER	MUNICIPALITY
Sally Martyn	Municipality of Central Elgin (Chairperson)
Lori Baldwin-Sands	City of St. Thomas (Vice-Chairperson)
Jim Jenkins	Township of Malahide
Anne Vanhoucke	Township of South-West Oxford
Judi Wright	Town of Aylmer
Gerry Richer	Town of Aylmer (alternate)

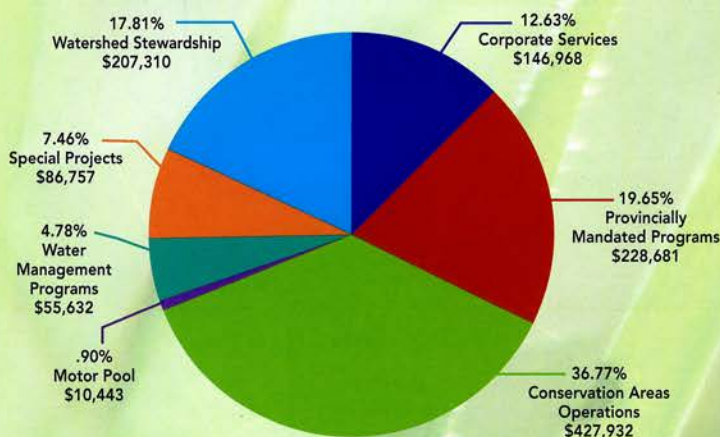
STAFF MEMBER	POSITION
Mr. Kim Smale	General Manager/ Secretary-Treasurer
Susan Mann	Financial Services Coordinator
Ed Pietrzak	Conservation Areas Supervisor
Tony Difazio	Resource Planning Coordinator
Peter Dragunas	Water Management Technician
Barry Martin	Operations Assistant
Laura Ronayne	Program Support Assistant
Ric Wellwood	Fundraising/Communications

2012 FINANCIAL REPORT

2012 REVENUE



2012 EXPENDITURES



Copies of the full 2012 Audited Financial Statements may be obtained by contacting the Authority Administration Centre.

YEAR IN REVIEW...

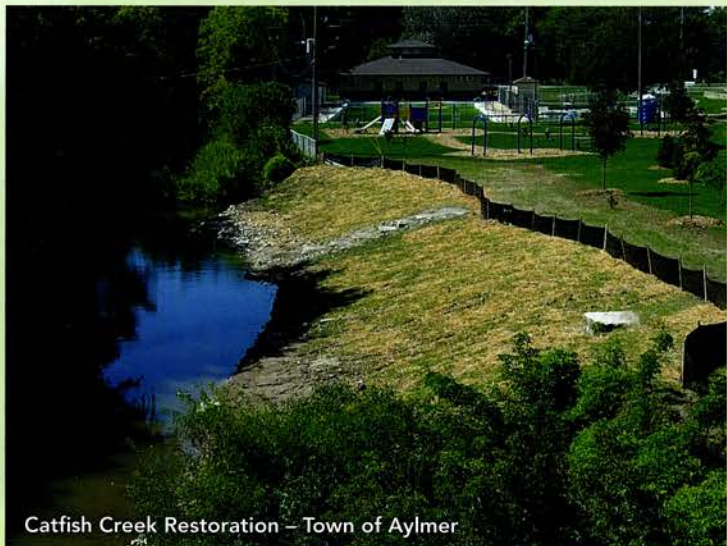
ENVIRONMENTAL PLANNING

In 2012, the CCCA worked with the Province to update its Generic Regulations to help streamline the application process, increase efficiencies with partner agencies and extend permit timelines allowing landowners to undertake activities in proximity to Natural Hazards. We anticipate final approval from the Minister of Natural Resources and filing with the Registrar of Regulations early in the new year.

Authority planning staff also assisted the County of Elgin with the preparation of its first Official Plan (OP) which was adopted by County Council in 2012 and should receive Provincial approval in 2013.

The following development applications, inquiries and land use planning applications were reviewed and processed by staff in 2012.

- Reviewed and commented on 50 Planning Act applications and Environmental Assessments;
- Received and commented on 13 Municipal Drain Reports and Drain Maintenance Requests;
- Issued 15 permits relative to the Conservation Authorities Act, Ontario Regulation 146/06 under O. Reg. 97/04; and,
- Provided responses to 44 property inquires (legal, real estate, general information requests).



Catfish Creek Restoration – Town of Aylmer

WATER MANAGEMENT

Fresh water is a natural resource crucial to the environmental and economic well-being of the Catfish Creek watershed. Water supports agriculture activities, industrial development, and recreation. Historically, periods of extreme weather patterns were uncommon and excessive water levels were relatively infrequent. However, as demand for water increases and climate changes occur, severe water level fluctuations are becoming more common.

The CCCA coordinates a Low Water Response Team which is comprised of representatives from local water user groups, member municipalities, farmers / landowners, recreation users, industry and government agencies which sit on the committee in an advisory capacity. Within the realm of the Low Water Response Plan, the local Water Response Team makes a decision on the appropriate measures

and conservation actions. The CCCA staff work closely with the local Catfish Creek Irrigation Advisory Committee to assist irrigators to achieve the outlined conservation measures. In 2012, the Catfish Creek Conservation Authority issued a Level I and a Level II Low Water Condition asking our constituents to refrain from unnecessary water use in order to maintain an adequate water supply to sustain aquatic ecosystems.



Marsh Quest

DRINKING WATER SOURCE PROTECTION

The CCCA reached a major milestone in 2012 by completing a Drinking Water Source Protection Plan for the Catfish Creek watershed. The goal of the plan is to protect the sources of municipal drinking water in the Catfish Creek watershed including two wells serving the community of Brownsville. It identifies vulnerable areas where drinking water sources face a risk of contamination, identifies significant threats to drinking water sources, and outlines policies and programs to reduce the risk posed by significant threats, and to prevent new ones from developing. The work of developing the Source Protection Plan was led by the Lake Erie Region Source Protection Committee which is a multi-stakeholder group with representatives from the Catfish Creek, Kettle Creek, Long Point Region and Grand River watersheds. The Proposed Source Protection Plan was submitted to the Ministry of Environment for final approval in December.



Carolinian Forest Festival

YEAR IN REVIEW...

WATERSHED STEWARDSHIP

Rural landowners within the Catfish Creek watershed benefited greatly from the various Stewardship Incentive Programs in which the CCCA was able to tap into in 2012.

The Royal Bank of Canada's (RBC) Blue Water Project awarded \$120,000 to the Catfish Creek, Kettle Creek, Long Point Region and Lower Thames Valley Conservation Authorities to assist landowners with projects that will help to improve and protect water quality in Elgin County. Ducks Unlimited Canada provided several landowners with financial and technical assistance to implement wetland restoration projects which benefit waterfowl, other wildlife and the overall health of the watershed. CCCA staff also worked very closely with the Ontario Soil and Crop Improvement Association to deliver the Canada-Ontario Farm Stewardship Program and the Species At Risk Farm Incentive Program to landowners throughout the watershed.



Scouts Canada Tree Planting

Photo: The Aylmer Express



Streambank Stabilization - Bradley Creek



Ontario Envirothon Competition
- Springwater Conservation Area

Photo: The Aylmer Express

REFORESTATION

2012, marked the third and final year of the Watershed Forest Cover Enhancement Project supported through the Ontario Power Generation's Carbon Sequestration / Biodiversity Management Program. Thanks to this partnership, the CCCA was able to plant over 90,000 native trees and shrubs to enhance interior forest habitat and extend natural heritage corridors throughout the Catfish Creek watershed. Fifty-five landowners participated in the project resulting in 40 hectares (100 acres) of land being reforested. Without the financial incentives and support provided through Ontario Power Generation, many landowners would have been unable to participate in helping the CCCA reach its reforestation targets.

SPRINGWATER



2013 SPECIAL EVENTS CALENDAR

- March 2 - 31 Maple Syrup Festival
* weekends & March Break
- April 27 Opening Day of Trout Fishing
- May 11 Tim Hortons Kids Trout Derby
- June 7 - 9 Van Fest
- July 5 - 7 Balls Bike Rally
- July 27 Kids, Cops and Canadian Tire Fishing Derby
- August 10 Home Building Centre Horseshoe Tournament
- August 16 - 18 Fred Eaglesmith Charity Music Festival
- August 31 Friends of Springwater Carnival and Fireworks
- December 7 Christmas Spirit Walk

For more information contact our office at (519) 773-9037
or visit our website at www.catfishcreek.ca



COMMUNITY OUTREACH



Stefan Cornelissen,
Student Scholarship

Photo: The Aylmer Express



Don Fick,
Conservation
Award

Photo
The Aylmer Express



Michael Chan, Minister of Tourism,
Culture and Sport
- Springwater Maple Syrup Festival

Photo: The Aylmer Express

COMMUNITY PARTNERSHIPS

Two sizable donations from the community provided the CCCA with the financial means to undertake much needed capital development improvements at the Springwater Conservation Area in 2012.

A three-way partnership with the Ontario Trillium Foundation and the Kinsmen Club of Aylmer provided \$39,600 to create the opportunity for unstructured play activity at Springwater through the installation of a new playground structure.

The Springwater Forest Trail Boardwalk and other improvements within the Springwater Forest were funded by a generous donation (\$57,500) from the Estate of Dorothy Fay Palmer, which was made in memory of the late John W.F. Palmer, a former member of the CCCA Board of Directors. Both of these projects will be enjoyed by the community for many years to come.



New Playground Equipment – Springwater Conservation Area



Springwater Forest Trail
Boardwalk Reconstruction

Photo: The Aylmer Express



Van Fest - Springwater Conservation Area

Photo: The Aylmer Express

MISSION STATEMENT

"To communicate and deliver resource management services and programs in order to achieve social and ecological harmony for the watershed"

The CCCA is a non-profit organization that needs your financial support and volunteerism to ensure locally driven environmental initiatives continue in the future. All donations are used for programs and projects within the Catfish Creek watershed.

YES, I would like to demonstrate my devotion and vision for a healthy environment by donating \$ _____ in support of the following initiative(s):

- Protection & Preservation of Conservation Lands
 Springwater Forest Preservation/Management
 Youth Environmental Education
 Commemorative Forest Program
 Wildlife Habitat
 Wetlands Restoration

Official tax receipt will be issued for minimum donations of \$20.00. Commemorative gifts and land donations graciously received.

Name: _____ Telephone: _____

Address: _____ Postal Code: _____

Payment in Cash, Visa, Mastercard, or Debit will gladly be accepted at the CCCA Office or please mail a cheque to:
CATFISH CREEK CONSERVATION AUTHORITY, 8079 Springwater Rd., R.R.#5, Aylmer, ON N5H 2R4



2012 PARTNERS/DONORS/VOLUNTEERS



(please notify our office of any errors or omissions)

- | | | | |
|--|-----------------------------------|---|-------------------------------------|
| Aaroc Aggregates | Friends of Springwater | Ministry of Natural Resources | Smale, Kim & DJ |
| Aylmer Express | Grand River C.A. | Ministry of Agriculture, Food & Rural Affairs | Soper, Sharyn |
| Basson, Arlene | Green Lane Community Trust | Ministry of Tourism and Culture | Springwater Packers |
| Biskup, Stefan | Hamilton Ward & Cathers Insurance | Municipality of Central Elgin | St. Thomas Field Naturalists |
| Calvar, Yves | Hayes, Colin & Elfriede | Moore, Max & Erma | St. Thomas Wood Carvers |
| Canadian Mental Health Association | Henderson, Norah | Natural Resource Gas Ltd. | Taylor, John & Betty |
| Caverly, Bill (in memoriam) | Hill, Thomas & Cheryl | Ontario Police College | TD Friends of the Environment |
| City of St. Thomas | IGPC Ethanol Incorporated | Ontario Power Generation | Thames Valley District School Board |
| Cleminshaw, George | Imperial Road Animal Hospital | Ontario Trillium Foundation | Tim Hortons Aylmer |
| Cleminshaw, Ruth (in memoriam) | Jakob, Joseph | Order of Good Cheer | Tirecraft Auto Centre |
| Conservation Ontario | Jenkins, Jim & Jeanette | Palmer, Dorothy Fay (Estate) | Town of Aylmer |
| County of Elgin | Karda, Mike | Parker Fuels | Township of Malahide |
| Dowler-Karn Fuels | Kettle Creek C.A. | Prout, Shelley | Township of South-West Oxford |
| Ducks Unlimited Canada | Kinsmen Club of Aylmer | Quai Du Vin Estate Winery | Uher, David & Margueritte |
| East Elgin Secondary School - Environmental Leadership Program | Koolen Electric | Riggs Engineering | Vandenbrink Farm Equipment |
| Elgin Federation of Agriculture | K&K Locksmiths | Rimnyak, William & Linda | VanDerVeen, Jan |
| Elgin Hiking Trail Club | Laemers Excavating | Rochus, Gary | Wagler Mini Barns |
| Elgin Wild Turkey Chapter | Long Point Region C.A. | Ronald, Richard & Janet | Waydan Auto Repair |
| Fick, Don & Rosina | Maltby, Kirk | Sawdust Entertainment | West Elgin Mutual Gardeners |
| Fisheries & Oceans Canada | Markey, Keith | Schneider, Reinhard & Jane | Williams Funeral Home |
| Foster, Raymond & Robin | Martyn, Sally | Scouts Canada | Wilson Well Drilling |
| | McConnell, Elizabeth & Bill | Secord Home Building Centre | Wiltsie Truck Bodies |
| | Ministry of the Environment | Shell Canada | Zap's Tree Services |

Thanks to the following businesses for their support toward the printing of the 2012 Annual Report:

RIGGS ENGINEERING LTD.

Peter Crook, P.Eng.
Brian Riggs, P.Eng.

Tel: (519) 657-1040 • Fax: (519) 657-8631
1240 Commissioners Rd. W.
Suite 205, London, Ontario N6K 1C7
www.riggseengineering.com

aylmer express
GRAPHICS GROUP

AYLMER LONDON WOODSTOCK TORONTO

design • print • bind • mail
www.aylmerexpress.ca | 519-773-3126

Hamilton Ward & Cathers
INSURANCE SERVICE LIMITED

519.773.8471
www.hwcinsurance.ca

Aylmer • Port Stanley • St. Thomas • Tillsonburg